

# TULLIS RUSSELL PAPERMAKERS



**PROJECT | STEAM BOILER AND TURBINE REFURBISHMENT, MARKINCH**

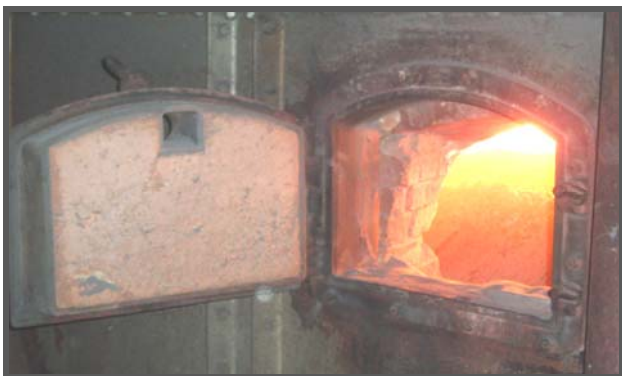
**OUR ROLE | DESIGN AND PROJECT MANAGEMENT**

**PROJECT BUDGET | £3 MILLION**

**CONTRACT DURATION | 9 MONTHS**

Tullis Russell's impressive facility in Fife requires 160MW of steam and 25MW of electricity to be available night and day, seven days a week.

When it became necessary to refurbish the high-pressure steam boilers and steam turbines, Tullis Russell turned to NIFES for assistance.



The project included:

- a new natural gas fuel infrastructure
- refurbishment of the coal fired boilers
- conversion of a coal fired boiler to gas
- steam turbine refurbishment
- new fault-current limiting reactors
- control systems and philosophy
- water treatment system

NIFES carefully managed 200 contractors during a very complex and demanding 9 month programme to ensure that the Combined Heat and Power plant continued to meet the needs of the paper production facilities.



In addition to this contract, NIFES has provided energy appraisals, engineering design, CDM Co-ordinator and other specialist technical services for fifteen years.

